



# Hydraulic Products

– For Clean and Leak-free Hydraulic Systems

HYDRAULICS



# X65 Range - Premium ISO 16028 Flat-Face Quick Couplings



QR code for X65 Range

DN5 (165), DN6.3 (265), DN10 (365), DN 12.5 (565),  
DN16 (665), DN19 (765), DN25 (065)

- Minimize contamination of your hydraulic system
- Spill free disconnection
- High performance
- Connect under residual pressure, only limited by your strength

Temperature range: ..... -30°C – +100°C (-22°F – +212°F)  
 Material seal:..... Nitrile (NBR/PUR, other sealing materials on request)  
 Material: ..... Steel (zinc-nickel, zinc passivation)  
 Connectability: ..... Only limited by operator strength  
 Disconnection under pressure: ..... Not allowed  
 Interchangeable with: ..... All brands dimensionally interchanging with ISO16028

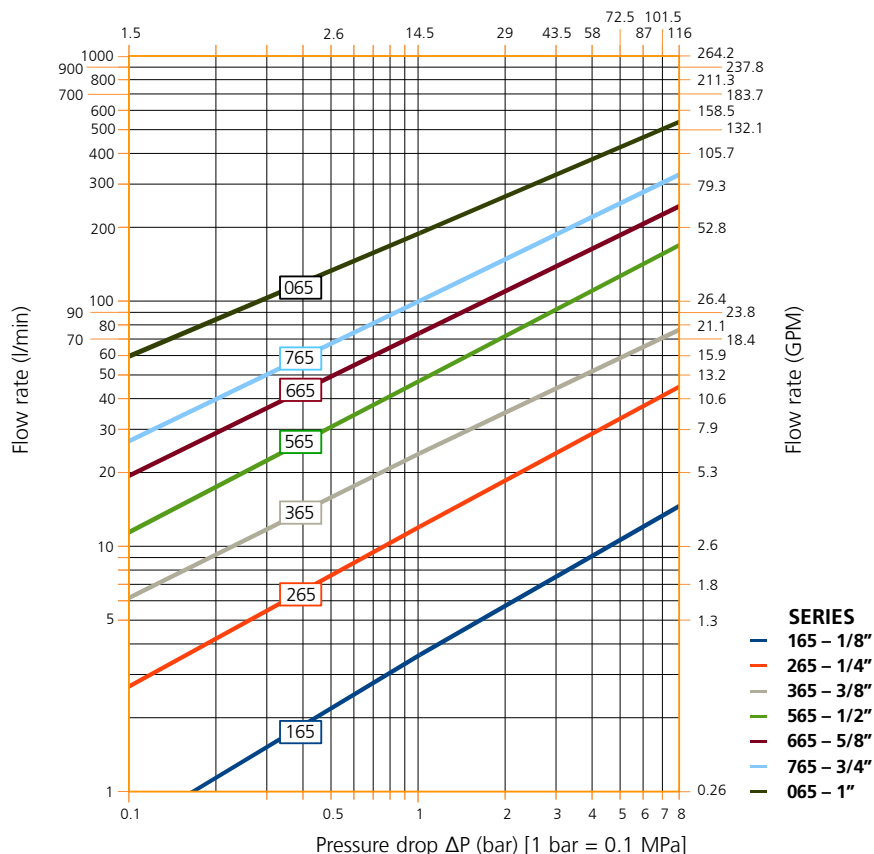


| Dia (mm)* | Body Size |      |      | Series | Flow rate @ ΔP = 3 Bar |         | Max. working pressure |       |              |       | Min. burst pressure |       |              |       | Spillage @ Disconnect (ml) |
|-----------|-----------|------|------|--------|------------------------|---------|-----------------------|-------|--------------|-------|---------------------|-------|--------------|-------|----------------------------|
|           | ISO - DN  | Inch | Dash |        | (l/min)**              | (GPM)** | Connected             |       | Disconnected |       | Connected           |       | Disconnected |       |                            |
| 12.0      | 5         | 1/8" | -02  | 165    | 7.5                    | 2.0     | 720                   | 10442 | 720          | 10442 | 1800                | 26106 | 1800         | 26106 | 0.02                       |
| 16.1      | 6.3       | 1/4" | -04  | 265    | 24                     | 6.3     | 500                   | 7251  | 500          | 7251  | 1500                | 21755 | 1500         | 21755 |                            |
| 19.7      | 10        | 3/8" | -06  | 365    | 44                     | 11.6    | 400                   | 5801  | 400          | 5801  | 1200                | 17404 | 1200         | 17404 |                            |
| 24.5      | 12.5      | 1/2" | -08  | 565    | 93                     | 24.6    | 400                   | 5801  | 400          | 5801  | 1200                | 17404 | 1200         | 17404 |                            |
| 27.0      | 16        | 5/8" | -10  | 665    | 139                    | 36.7    | 400                   | 5801  | 400          | 5801  | 1200                | 17404 | 1200         | 17404 |                            |
| 30.0      | 19        | 3/4" | -12  | 765    | 188                    | 49.7    | 400                   | 5801  | 400          | 5801  | 1200                | 17404 | 1200         | 17404 |                            |
| 36.0      | 25        | 1"   | -16  | 065    | 330                    | 87.2    | 350                   | 5076  | 350          | 5076  | 1200                | 17404 | 1200         | 17404 |                            |

(\*\*) If the application is constantly above this flow rate for the respective coupling size, a larger coupling size should be considered to avoid too high a pressure drop. The couplings can handle a much higher flow rate but there is a risk of heat build-up in the system. In general, surge flows above the normal flow rate are not a problem. (\*) Diameter for easy identification of ISO16028 Flat-Face coupling size (see picture).

## PRESSURE DROP CHART

Pressure drop ΔP (PSI)



CEJN reserves the right to make changes without further notification. Check with an authorized CEJN distributor for availability and prices. All measurements are in mm. Thread connections are listed according to ISO Standards. Other connections on request. Please visit our website, [www.cejn.com](http://www.cejn.com), for general maintenance tips.



QR code for X64 Range

# X64 Range - ISO 16028 Flat-Face Pressure Eliminator Nipples

DN6.3 (264), DN10 (364), DN12.5 (564), DN16 (664), DN19 (764), DN25 (064)

- Connection under high residual pressure
- Minimize contamination of your hydraulic system
- Spill free disconnection
- High performance

Temperature range: ..... -30°C – +100°C (-22°F – +212°F)  
 Material seal:..... Nitrile (NBR/PUR)  
 Material: ..... Steel (zinc-nickel, zinc passivation)  
 Connectability: ..... With static pressure up to 400 bar on the nipple side  
 Disconnection under pressure: ..... Not allowed  
 Interchangeable with: ..... All brands dimensionally interchanging with ISO16028

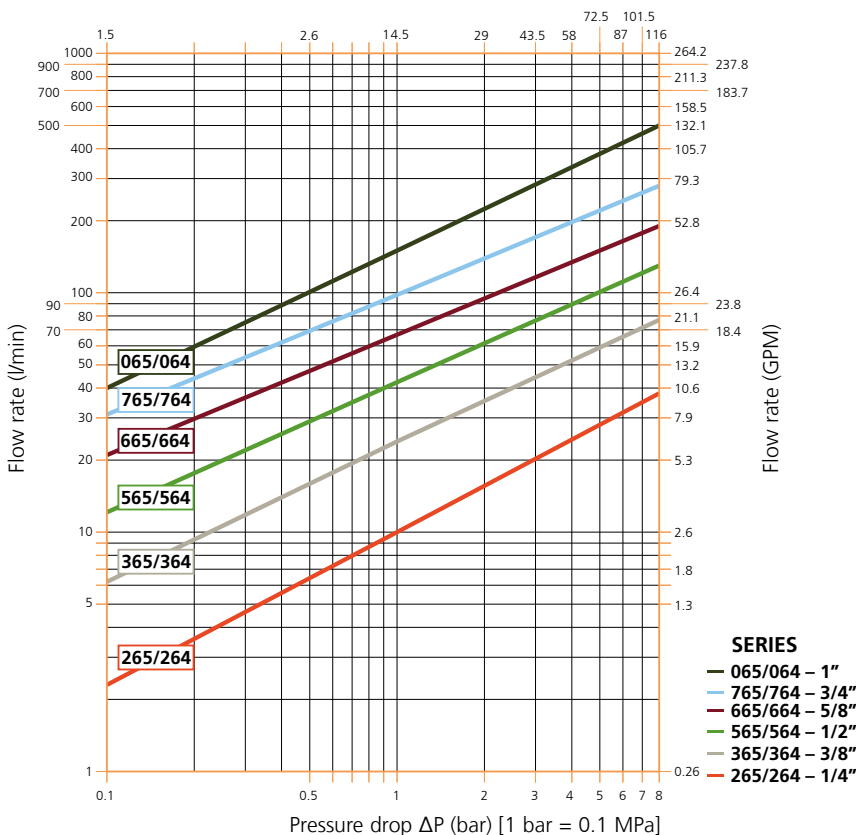


| Dia (mm)* | Body Size |      |      | Series | Flow rate @ ΔP = 3 Bar |         | Max. working pressure |       |              |       | Min. burst pressure |       |              |       | Spillage @ Disconnect (ml) |
|-----------|-----------|------|------|--------|------------------------|---------|-----------------------|-------|--------------|-------|---------------------|-------|--------------|-------|----------------------------|
|           | ISO - DN  | Inch | Dash |        | (l/min)**              | (GPM)** | Connected             |       | Disconnected |       | Connected           |       | Disconnected |       |                            |
|           |           |      |      |        |                        |         | (bar)                 | (PSI) | (bar)        | (PSI) | (bar)               | (PSI) | (bar)        | (PSI) |                            |
| 16.1      | 6.3       | 1/4" | -04  | 264    | 20                     | 5.3     | 500                   | 7251  | 500          | 7251  | 1500                | 21755 | 1500         | 21755 | 0.02                       |
| 19.7      | 10        | 3/8" | -06  | 364    | 44                     | 11.6    | 400                   | 5801  | 400          | 5801  | 1200                | 17404 | 1200         | 17404 | 0.03                       |
| 24.5      | 12.5      | 1/2" | -08  | 564    | 77                     | 20.3    | 400                   | 5801  | 400          | 5801  | 1200                | 17404 | 1200         | 17404 | 0.04                       |
| 27.0      | 16        | 5/8" | -10  | 664    | 116                    | 30.6    | 400                   | 5801  | 400          | 5801  | 1200                | 17404 | 1200         | 17404 | 0.06                       |
| 30.0      | 19        | 3/4" | -12  | 764    | 171                    | 45.2    | 400                   | 5801  | 400          | 5801  | 1200                | 17404 | 1200         | 17404 | 0.10                       |
| 36.0      | 25        | 1"   | -16  | 064    | 290                    | 76.6    | 350                   | 5076  | 350          | 5076  | 1200                | 17404 | 1200         | 17404 | 0.11                       |

(\*\*) If the application is constantly above this flow rate for the respective coupling size, a larger coupling size should be considered to avoid too high a pressure drop. The couplings can handle a much higher flow rate but there is a risk of heat build-up in the system. In general, surge flows above the normal flow rate are not a problem. (\*) Diameter for easy identification of ISO16028 Flat-Face coupling size (see picture).

## PRESSURE DROP CHART

Pressure drop ΔP (PSI)



CEJN reserves the right to make changes without further notification. Check with an authorized CEJN distributor for availability and prices. All measurements are in mm. Thread connections are listed according to ISO Standards. Other connections on request. Please visit our website, [www.cejn.com](http://www.cejn.com), for general maintenance tips.





QR code for TLX Range

# TLX Couplings & Nipples

3/4" (607), 1" (707), 1 1/4" (807)



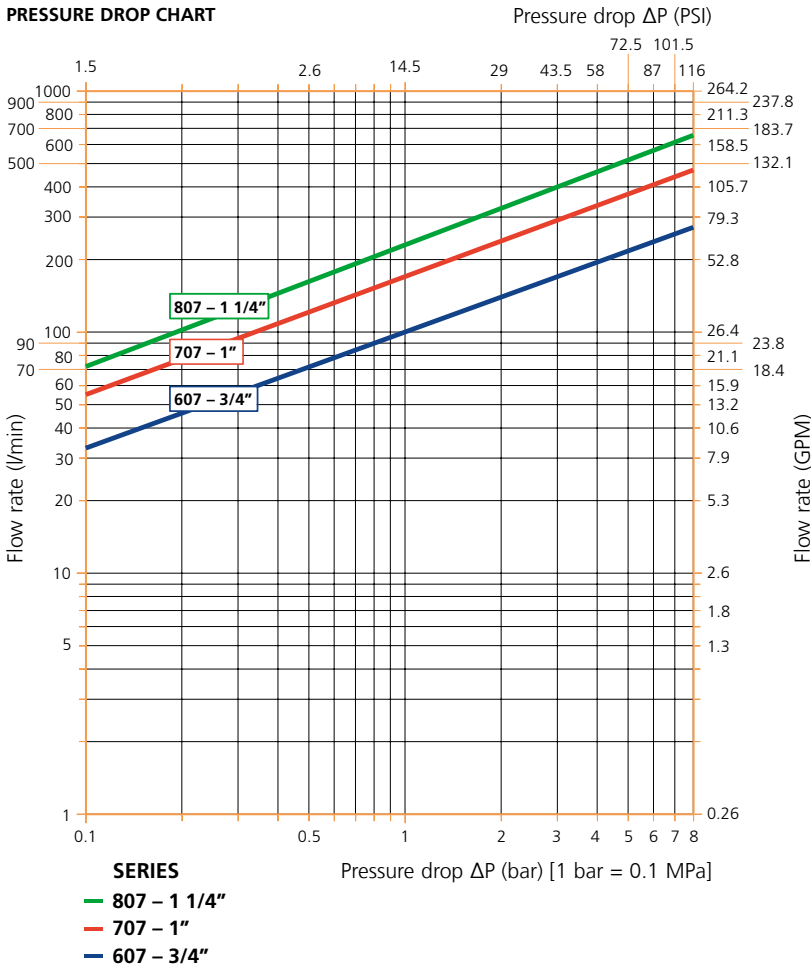
- The Super-Duty connector with extremely high resilience to surge flows
- The Super-Duty connector that handles the pressure impulses
- The Super-Duty connector with pure and simple robustness
- Designated for the toughest construction and demolition applications

Temperature range: ..... -30°C – +100°C (-22°F – +212°F)  
 Material seal:..... Nitrile (NBR)  
 Material: ..... High alloy steels with Zinc-Nickel surface  
 Connectability: ..... Connection with residual pressure only limited by operator strength  
 Disconnection under pressure: ..... Disconnection with residual pressure in the system is allowed

| Body Size |      | Flow rate<br>ΔP = 3 Bar |         | Max. working pressure |                 |                    |                    | Min. burst pressure |                 |                    |                    |
|-----------|------|-------------------------|---------|-----------------------|-----------------|--------------------|--------------------|---------------------|-----------------|--------------------|--------------------|
| Inch      | Dash | (l/min)**               | (GPM)** | Connected (bar)       | Connected (PSI) | Disconnected (bar) | Disconnected (PSI) | Connected (bar)     | Connected (PSI) | Disconnected (bar) | Disconnected (PSI) |
| 3/4"      | -12  | 169                     | 42.3    | 400                   | 5800            | 330                | 4786               | 1600                | 23206           | 1000               | 14503              |
| 1"        | -16  | 291                     | 75.3    | 400                   | 5800            | 330                | 4786               | 1600                | 23206           | 1000               | 14503              |
| 1 1/4"    | -20  | 400                     | 105.7   | 400                   | 5800            | 330                | 4786               | 1600                | 23206           | 1000               | 14503              |

(\*\*) If the application is constantly above this flow rate for the respective coupling size, a larger coupling size should be considered to avoid too high a pressure drop. The couplings can handle a much higher flow rate but there is a risk of heat build-up in the system. In general, surge flows far above the normal flow rate are not a problem.

## PRESSURE DROP CHART



**COUPLINGS & NIPPLES**

| Body Size |      | Connection                  |               |              | Part No.        |             | Dimension locking sleeve Hex |        | Weight   |      |        |      |
|-----------|------|-----------------------------|---------------|--------------|-----------------|-------------|------------------------------|--------|----------|------|--------|------|
| Inch      | Dash | Description                 | Type          | Standards    | Coupling/Female | Nipple/Male | (mm)                         | (Inch) | Coupling |      | Nipple |      |
|           |      |                             |               |              |                 |             |                              |        | (kg)     | (lb) | (kg)   | (lb) |
| 3/4"      | -12  | Rc 3/4"                     | Female thread | ISO 7/1      | 10 607 1101     | 10 607 6101 | 55                           | 2.17   | 1.073    | 2.4  | 1.188  | 2.6  |
|           |      | G 3/4"                      | Female thread | DIN3852      | 10 607 1301     | 10 607 6301 |                              |        | 0.989    | 2.2  | 1.105  | 2.4  |
|           |      | G 1"                        | Female thread |              | 10 607 1203     | 10 607 6203 |                              |        | 1.029    | 2.3  | 1.145  | 2.5  |
|           |      | G 3/4" JIS ORB              | Female thread | JIS B2351    | 10 607 1231     | 10 607 6231 |                              |        | 1.066    | 2.4  | 1.182  | 2.6  |
|           |      | 3/4" NPT                    | Female thread | ANSI B1.20.3 | 10 607 1401     | 10 607 6401 |                              |        | 1.079    | 2.4  | 1.195  | 2.6  |
|           |      | 1 1/16"-12 UN (3/4" SAE)    | Female thread | SAE J 1926-1 | 10 607 1601     | 10 607 6601 |                              |        | 1.066    | 2.4  | 1.182  | 2.6  |
| 1"        | -16  | Rc 1"                       | Female thread | ISO 7/1      | 10 707 1103     | 10 707 6103 | 65                           | 2.56   | 1.892    | 4.2  | 2.067  | 4.6  |
|           |      | G 1"                        | Female thread | DIN3852      | 10 707 1203     | 10 707 6203 |                              |        | 1.644    | 3.6  | 1.819  | 4.0  |
|           |      | G 1 1/4"                    | Female thread |              | 10 707 1204     | 10 707 6204 |                              |        | 1.788    | 3.9  | 1.964  | 4.3  |
|           |      | G 1" JIS ORB                | Female thread | JIS B2351    | 10 707 1233     | 10 707 6233 |                              |        | 1.891    | 4.2  | 2.064  | 4.6  |
|           |      | 1" NPT                      | Female thread | ANSI B1.20.3 | 10 707 1403     | 10 707 6403 |                              |        | 1.899    | 4.2  | 2.074  | 4.6  |
|           |      | 1 5/16"-12 UN (1" SAE)      | Female thread | SAE J 1926-1 | 10 707 1603     | 10 707 6603 |                              |        | 1.883    | 4.2  | 2.059  | 4.5  |
| 1 1/4"    | -20  | Rc 1 1/4"                   | Female thread | ISO 7/1      | 10 807 1104     | 10 807 6104 | 75                           | 2.95   | 3.044    | 6.7  | 3.631  | 8.0  |
|           |      | G 1 1/4"                    | Female thread | DIN3852      | 10 807 1204     | 10 807 6204 |                              |        | 2.843    | 6.3  | 3.168  | 7.0  |
|           |      | G 1 1/2"                    | Female thread |              | 10 807 1205     | 10 807 6205 |                              |        | 2.959    | 6.5  | 3.540  | 7.8  |
|           |      | G 1 1/4" JIS ORB            | Female thread | JIS B2351    | 10 807 1234     | 10 807 6234 |                              |        | 3.032    | 6.7  | 3.649  | 8.0  |
|           |      | 1 1/4" NPT                  | Female thread | ANSI B1.20.3 | 10 807 1404     | 10 807 6404 |                              |        | 3.052    | 6.7  | 3.640  | 8.0  |
|           |      | 1 5/8"-12 UN - (1 1/4" SAE) | Female thread | SAE J 1926-1 | 10 807 1604     | 10 807 6604 |                              |        | 3.030    | 6.7  | 3.619  | 8.0  |

**Mounting Bracket - Weldable**



| Coupling Size |      | Description              | Part No.    |
|---------------|------|--------------------------|-------------|
| Inch          | Dash |                          |             |
| 3/4"          | -12  | Mounting bracket for TLX | 10 607 4960 |
| 1"            | -16  |                          | 10 707 4970 |
| 1 1/4"        | -16  |                          | 10 807 4980 |

**Dust Caps - Plastic with wire harness**



| Coupling Size |      | Description | Part No.        |             |
|---------------|------|-------------|-----------------|-------------|
| Inch          | Dash |             | Coupling/Female | Nipple/Male |
| 3/4"          | -12  | Dust cap    | 10 607 1000     | 10 607 1050 |
| 1"            | -16  |             | 10 707 1000     | 10 707 1050 |
| 1 1/4"        | -20  |             | 10 807 1000     | 10 807 1050 |

**Monkey Wrench - Accessory for simple connection that fits all sizes of TLX**



| Coupling Size |      | Description   | Part No.    |
|---------------|------|---------------|-------------|
| Inch          | Dash |               |             |
| 3/4"          | -12  | Monkey Wrench | 10 807 4999 |
| 1"            | -16  |               |             |
| 1 1/4"        | -20  |               |             |



CEJN reserves the right to make changes without further notification. Check with an authorized CEJN distributor for availability and prices. The local CEJN companies may carry different versions as standard stock items. All G-thread connection (BSP) TLX couplings and nipples above are stock standard items at factory. The other thread versions are produced on order and the typical lead time is two weeks from factory. Please visit our website, [www.cejn.com](http://www.cejn.com), for general maintenance tips.

# Multi-X Range



QR code for Multi-Couplings

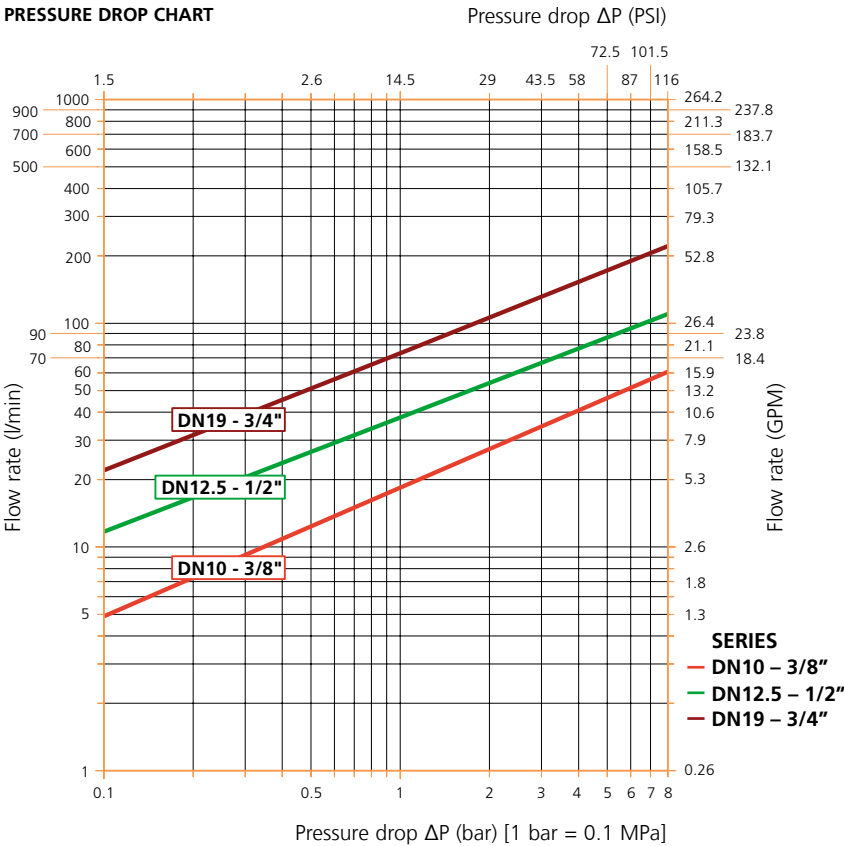
- Compact design
- Great flexibility and high performance
- Easy and ergonomic to maneuver - perpendicular lever movement
- Connect with residual pressure



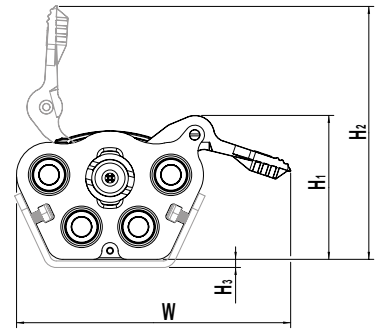
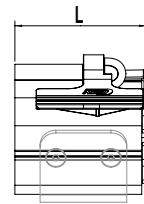
**Max working pressure:**..... 350 bar (5076 PSI)  
**Min. burst pressure:**..... 1200 bar (17405 PSI)  
**Temperature range:** ..... -30°C – +100°C (-22°F – +212°F)  
**Material female plate:**..... Zinc plated steel, anodized aluminum, zinc, brass  
**Material male plate:** ..... Zinc plated steel, anodized aluminum, brass  
**Material seal:**..... NBR/PUR  
**Disconnection under pressure:** ..... To be avoided. Residual pressure can result in recoil effect during disconnection. Always grip the lever firmly.  
**Comment:** ..... Contact CEJN representatives for recommendations for high impulse applications.

| Connectability case No.  | DN10 - 3/8"        | DN12.5 - 1/2"      | DN19 - 3/4"        |
|--|--------------------|--------------------|--------------------|
| 1. Connectable with residual pressure on the male side and free to drain on the female side.         | 350 bar (5076 PSI) | 350 bar (5076 PSI) | 350 bar (5076 PSI) |
| 2. Connectable with residual pressure on the female side and free to drain on the male side.         | 250 bar (3626 PSI) | 150 bar (2175 PSI) | 60 bar (870 PSI)   |
| 3. Connectable with residual pressure on the male side and 10 bar return pressure on the female side | 250 bar (3626 PSI) | 220 bar (3626 PSI) | 220 bar (3191 PSI) |

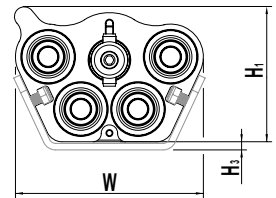
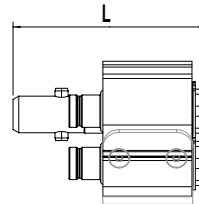
## PRESSURE DROP CHART



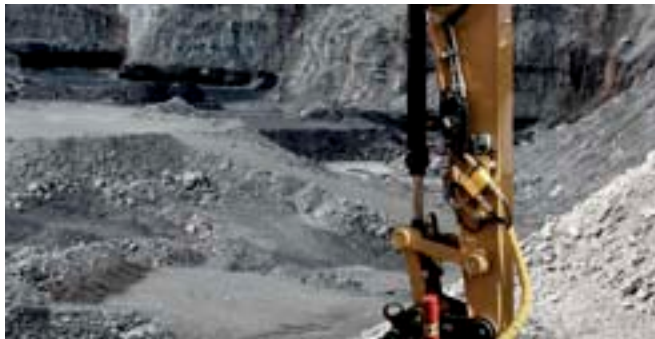
## FEMALE PLATE



## MALE PLATE



CEJN reserves the right to make changes without further notification. Check with an authorized CEJN distributor for availability and prices. All measurements are in mm. Please visit our website, [www.cejn.com](http://www.cejn.com), for general maintenance tips.







## Multi-X Duo

| Coupling Size |      |      | No. of lines | Connection   |              | Part No.     |             | Dim. Female plate |     |     |     |    | Dim. Male plate |     |    |    |    |
|---------------|------|------|--------------|--------------|--------------|--------------|-------------|-------------------|-----|-----|-----|----|-----------------|-----|----|----|----|
| ISO - DN      | Inch | Dash |              | Female plate | Male plate   | Female plate | Male plate  | L                 | W   | H1  | H2  | H3 | L               | W   | H1 | H2 | H3 |
| 10            | 3/8" | -06  | 2            | WEO 1/2"     | WEO 3/8"     | 10 932 2000  | 10 932 2050 | 83                | 168 | 70  | 138 | 5  | 116             | 116 | 66 | -  | 5  |
|               |      |      |              | G 3/8" (BSP) | G 3/8" (BSP) | 10 932 2200  | 10 932 2250 | 83                | 168 | 70  | 138 | 5  | 116             | 116 | 66 | -  | 5  |
| 12.5          | 1/2" | -08  |              | WEO 3/4"     | WEO 1/2"     | 10 932 2001  | 10 932 2051 | 98                | 176 | 79  | 139 | 5  | 138             | 132 | 73 | -  | 5  |
|               |      |      |              | G 1/2" (BSP) | G 1/2" (BSP) | 10 932 2201  | 10 932 2251 | 98                | 176 | 79  | 139 | 5  | 138             | 132 | 73 | -  | 5  |
| 19            | 3/4" | -12  |              | WEO 3/4"     | WEO 3/4"     | 10 932 5002  | 10 932 5052 | 120               | 214 | 107 | 170 | 5  | 182             | 179 | 97 | -  | 5  |
|               |      |      |              | G 3/4" (BSP) | G 3/4" (BSP) | 10 932 5202  | 10 932 5252 | 120               | 214 | 107 | 170 | 5  | 182             | 179 | 97 | -  | 5  |



## Multi-X Quattro

| Coupling Size |           |         | No. of lines | Connection          |                     | Part No.      |             | Dim. Female plate |     |     |     |     | Dim. Male plate |     |     |    |    |   |
|---------------|-----------|---------|--------------|---------------------|---------------------|---------------|-------------|-------------------|-----|-----|-----|-----|-----------------|-----|-----|----|----|---|
| ISO - DN      | Inch      | Dash    |              | Female plate        | Male plate          | Female plate  | Male plate  | L                 | W   | H1  | H2  | H3  | L               | W   | H1  | H2 | H3 |   |
| 10            | 3/8"      | -06     | 4            | WEO 1/2"            | WEO 3/8"            | 10 932 3000   | 10 932 3050 | 83                | 168 | 88  | 155 | 5   | 116             | 116 | 83  | -  | 5  |   |
|               |           |         |              | G 3/8" (BSP)        | G 3/8" (BSP)        | 10 932 3200   | 10 932 3250 | 83                | 168 | 88  | 155 | 5   | 116             | 116 | 83  | -  | 5  |   |
| 10+12.5       | 3/8"+1/2" | -06/-08 |              | 2+2                 | WEO 1/2"+3/4"       | WEO 3/8"+1/2" | 10 932 4000 | 10 932 4050       | 98  | 176 | 99  | 159 | 5               | 138 | 132 | 93 | -  | 5 |
|               |           |         |              | G 3/8"+G 1/2" (BSP) | G 3/8"+G 1/2" (BSP) | 10 932 4200   | 10 932 4250 | 98                | 176 | 99  | 159 | 5   | 138             | 132 | 93  | -  | 5  |   |
| 12.5          | 1/2"      | -08     | 4            | WEO 3/4"            | WEO 1/2"            | 10 932 4001   | 10 932 4051 | 98                | 176 | 99  | 159 | 5   | 138             | 132 | 93  | -  | 5  |   |
|               |           |         |              | G 1/2" (BSP)        | G 1/2" (BSP)        | 10 932 4201   | 10 932 4251 | 98                | 176 | 99  | 159 | 5   | 138             | 132 | 93  | -  | 5  |   |
| 12.5+19       | 1/2"+3/4" | -08+-12 |              | 2+2                 | WEO 3/4"            | WEO 1/2"+3/4" | 10 932 5000 | 10 932 5050       | 120 | 214 | 107 | 170 | 5               | 182 | 179 | 97 | -  | 5 |
|               |           |         |              | G 1/2"+G 3/4" (BSP) | G 1/2"+G 3/4" (BSP) | 10 932 5200   | 10 932 5250 | 120               | 214 | 107 | 170 | 5   | 182             | 179 | 97  | -  | 5  |   |



## Multi-X Hexa

| Coupling Size |      |      | No. of lines | Connection   |              | Part No.     |             | Dim. Female plate |     |     |     |    | Dim. Male plate |     |    |    |    |
|---------------|------|------|--------------|--------------|--------------|--------------|-------------|-------------------|-----|-----|-----|----|-----------------|-----|----|----|----|
| ISO - DN      | Inch | Dash |              | Female plate | Male plate   | Female plate | Male plate  | L                 | W   | H1  | H2  | H3 | L               | W   | H1 | H2 | H3 |
| 10            | 3/8" | -06  | 6            | WEO 1/2"     | WEO 3/8"     | 10 932 5006  | 10 932 5056 | 120               | 214 | 107 | 170 | 5  | 182             | 179 | 97 | -  | 5  |
|               |      |      |              | G 3/8" (BSP) | G 3/8" (BSP) | 10 932 5206  | 10 932 5256 | 120               | 214 | 107 | 170 | 5  | 182             | 179 | 97 | -  | 5  |

CEJN reserves the right to make changes without further notification. Check with an authorized CEJN distributor for availability and prices. All measurements are in mm. Please visit our website, [www.cejn.com](http://www.cejn.com), for general maintenance tips.





**CEJN**® *The Quick Connect*  
**Solution Provider**

