



# Safety Reel

## Guide

- 19 911 20XX – Hose reel, S (Air)
- 19 911 21XX – Hose reel, M (Air)
- 19 911 22XX – Hose reel, S/M (Water)
- 19 911 24XX – Hose reel, S/M (Breathing Air)
- 19 911 25XX – Hose reel, S/M (Rubber hose)



Edition B - 2021-05-31

CEJN AB  
Rattvägen 1  
S-541 34 Skövde  
Sweden  
[www.cejn.com](http://www.cejn.com)

User instructions:  
[www.cejn.com/safetyreel](http://www.cejn.com/safetyreel)

**EC Declaration of Conformity** – We declare that the products identified below:  
Hose Reel Type 19 911 20XX, 19 911 21XX, 19 911 22XX, 19 911 24xx and 19 911 25xx conform to: 2006/42/EG (EN ISO 12100:2010)

## 1. Safety



**WARNING!**

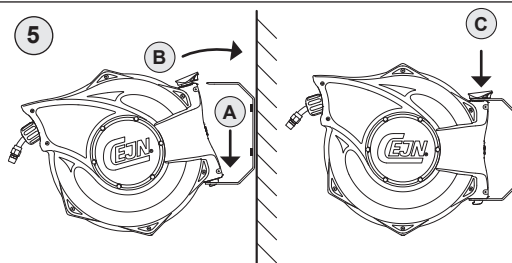
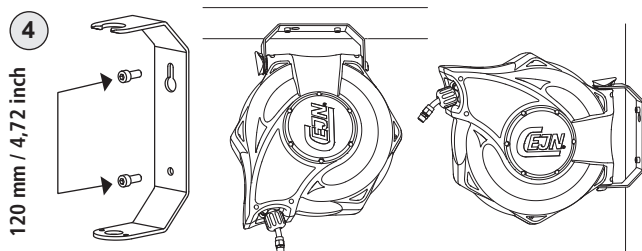
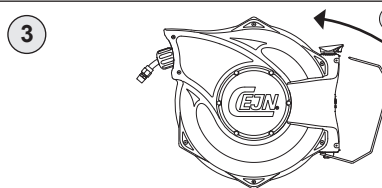
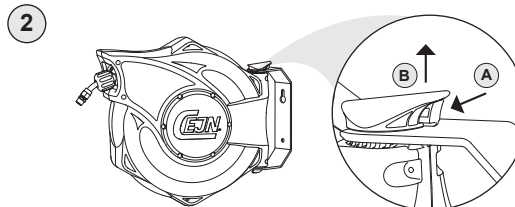
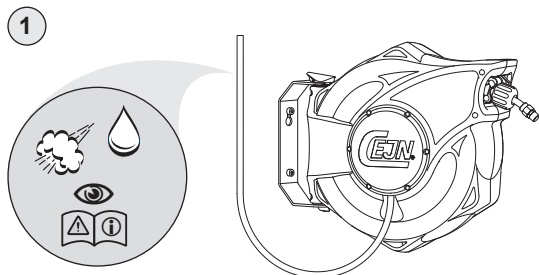
The products are intended for use by knowledgeable persons having the technical skill necessary to evaluate their suitability for specific applications. Read all safety instructions carefully before attempting to install, operate, or maintain this product. Only qualified personnel should undertake the installation, commissioning and maintenance of this product. Before carrying out maintenance or repair work, always disconnect the hose reel from the air source. If the reel must be disassembled, release spring tension before further dismantling.



## 2. Installation

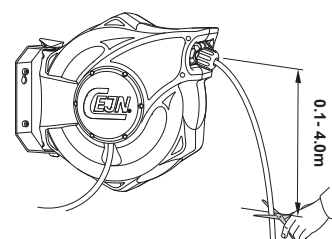
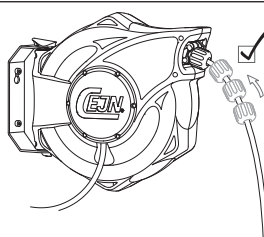
For more detailed information regarding installing and operating of the reel, see our instruction videos at [www.cejn.com/safetyreel](http://www.cejn.com/safetyreel)

### 2.1 Assembly



### 2.2 Hose length

The stop ball is allowed to be moved inwards. The spring force requires no adjustment. See video instruction for further information at [www.cejn.com/safetyreel](http://www.cejn.com/safetyreel)



### 2.3 Connecting the hose reel

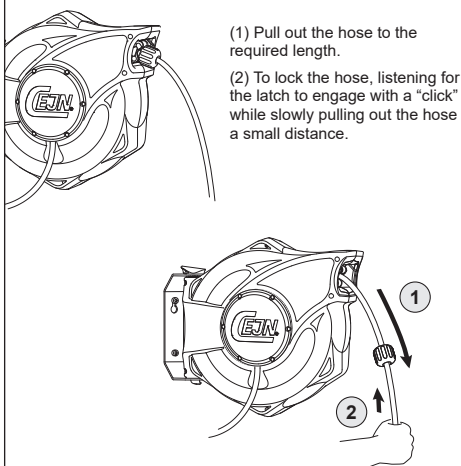
Connect the reel to the air/water source at the correct working pressure as follows:

	199112020/-21	199112022/-23	199112040/-41	199112080/-81/-82/-83	199112120/-21	199112130/-31
Application	Compressed air	Compressed air	Compressed air	Compressed air	Compressed air	Compressed air
Hose length	7 m	10 m	5 m	10 m	17 m	14 m
Internal diameter of hose	Ø 8 mm	Ø 8 mm	Ø 11 mm	Ø 8 mm	Ø 8 mm	Ø 9.5 mm
Connection	1/4"	1/4"	1/2"	eSafe	1/4"	3/8"
Temperature range	-20°C - +60°C	-20°C - +60°C	-20°C - +60°C	-20°C - +60°C	-20°C - +60°C	-20°C - +60°C
Max Working pressure	16 bar	16 bar	12 bar	16 bar	16 bar	16 bar

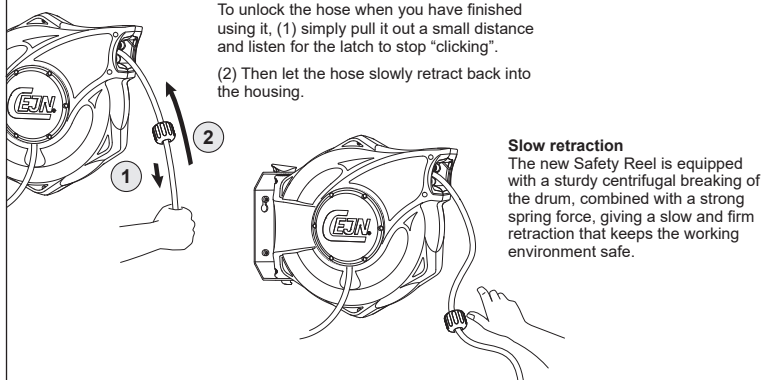
	199112132/-33	199112140/-41	199112150/-51	199112180/-81/-82/-83	199112230/-31	199112240/-41
Application	Compressed air (Anti-Spark)	Compressed air	Compressed air	Compressed air	Water	Water
Hose length	14 m	10 m	8 m	17 m	14 m	10 m
Internal diameter of hose	Ø 9.5 mm	Ø 11 mm	Ø 13 mm	Ø 8 mm	Ø 9.5 mm	Ø 11 mm
Connection	3/8"	1/2"	1/2"	eSafe	3/8"	1/2"
Temperature range	-20°C - +60°C	-20°C - +60°C	-20°C - +60°C	-20°C - +60°C	5° C - +60°C	5° C - +60°C
Max Working pressure	12 bar	12 bar	10 bar	16 bar	max. 7 bar (60°C) max. 9 bar (20°C)	max. 7 bar (60°C) max. 9 bar (20°C)

## 3. Operation

### 3.1 Pulling out the hose



### 3.2 Retracting the hose



### 3.3 The hose cannot be fully retracted

If the hose gets jammed when retracted, simply pull out the hose to its full length and let it retract freely without assistance. If you experience further problems or other malfunctions, contact your local distributor for guidance. See videos at [www.cejn.com/safetyreel](http://www.cejn.com/safetyreel) for more guidance

## 4. Maintenance



- Carry out regular checks that there are no problems with the hose, hose guiding and external parts. For detailed guidance of how to replace the hose, please see instruction videos at [www.cejn.com/safetyreel](http://www.cejn.com/safetyreel)
- Any damage or defects must be repaired immediately.
- Repairs and maintenance must be carried out by a qualified technician only.
- Only original spare parts must be used!

## 5. Disposal/Recycling



**IMPORTANT!**  
Help us to take care of the environment. When disposing of the hose reel, please do so in accordance with local environmental regulations.

## 6. Warranty

CEJN AB provides a two (2) year warranty from the date of manufacture. Contact your retailer concerning warranty enquiries.

## 7. Spare parts

For safety reasons, only original spare parts must be used. For a complete overview of spare parts, see [www.cejn.com/safetyreel](http://www.cejn.com/safetyreel)

*Marcus Allerbjer*

Marcus Allerbjer  
CEJN AB